

Grovelands News



November 2011

Harvest



Thanks you to everyone who has returned the envelopes with donations towards this year's harvest appeal by sending in your donations for the Lunchbowl Project.

LATENESS

Children can come into school between 8.45 am and 8.55 am each morning and it helps considerably if they arrive at school promptly by 8.55 am. It is very disruptive if children are still



coming into class when the register is being called and also embarrassing for the child. We know that there may be the odd time when a child is late, but we would ask that you try to get your child here on time.

BAGUETTES

The Kitchen have asked me to let you know that they will not be providing baguettes between Christmas and Easter. East Sussex County Council have decided that they would prefer children to have hot meal when the weather is cold.



TALKING HEAD

Many people are remarking just how smart our children are looking in school, so thank you for sending them in their new school uniform.

At this time rehearsals for the Christmas shows are beginning to take place and we suddenly realise that winter and indeed Christmas will soon be upon us. Please ensure you have all the dates in your diaries as there is much to look forward to this term. (Dates can be found on the TV outside the office, on newsletters and letters and on our website www.grovelands-school.co.uk.)

Julie Claxton

Oaks After School Club

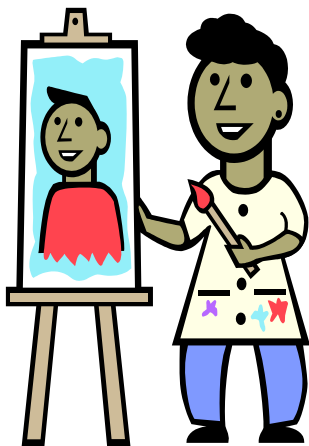


Oaks After School Club is available every school day from 3.30 - 6.00 pm. Children are taken from school to the Children's Centre (next door to Grovelands) and have lots of activities to do until you are able to pick them up. There are flexible rates depending on the time required and the number of children in the family. Please ring 07874 879911 or 01323 848758 between 3.00 and 6.00 pm to find out more details.

If you have any art/craft or scrapbook material, please give them to Mrs Linda Russell or leave them at the school office.

Grovelands Artists

Children from Grovelands are taking part in the Winter Exhibition at Gallery North, Hailsham. This is our local art gallery. Children have produced all sorts of different and exciting work with the theme "Portrait".



You can visit the gallery on Tuesday and Saturday. There will be a photo display of some of the work in our entrance foyer. Please take time to visit this as it's really worthwhile and there is some splendid work done by our children in Years 1-5.

HOME/SCHOOL AGREEMENT

A few people have still not returned these. Please can you send them in asap. Extra copies are available from the office.

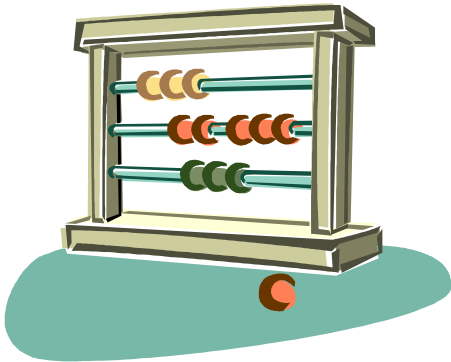
Eco Award

Grovelands has recently been awarded a Silver Award from Eco-Schools in recognition for our achievement in working towards a sustainable lifestyle.

To gain this award the children recycle paper; turn off lights and collect and compost food waste. In addition, larger projects have included healthy cooking, growing vegetables and Walk to School Whenever You Can Month.

Mathletics Update

As you are aware we had an initial whole school trial of Mathletics in October. Following this trial and taking account of feedback from staff,



pupils and parents we have signed up our children in Years 3 & 5 to have access to Mathletics for a year until October 2012. As there is a significant cost implication this will allow us to make an informed decision in October next year regarding access for further children, depending on how useful Mathletics is in improving maths skills and raising stand-

ards in our chosen year groups. Children in Years 3 and 5 can continue using their existing login details to access Mathletics. They will have some homework set on the Mathletics website and we hope parents will support them in completing these tasks, as well as playing the games, so they can really benefit from this excellent opportunity to develop their skills.

If you wish to continue with Mathletics and your child is not currently in Year 3 or 5 it is possible to visit the Mathletics website and make a Home Purchase. I have been informed children will be able to transfer their school account records to their home account.

We will keep you updated on our progress with Mathletics.



Show Your Spots, Let's Raise Lots!

The school will be supporting 'Children in Need' by holding a 'mufti day' (non school uniform) and inviting all children and staff to wear something with spots if they have it! Please bring a donation with you on the day. A suggested amount is £1.



Parking

A reminder once again to drive slowly and park safely on our site. Please do not park on the grass under any circumstances.

Car drivers who continue to flout our rules will be asked to park outside the school gates. This is for the safety of everyone on the school site.

NEW INTAKE SEPTEMBER 2012

We will be holding open events for the parents of children hoping to start Grovelands next September (details below). Please spread the word amongst any friends and family who have children who were born between 1st September 2007 and 31st August 2008.

Dates for your Diary

15th November	18.15—19.30	Open evening for new intake parents
16th & 17th November	09.15—11.00	Open morning for new intake parents
17th—23rd November		Travelling Book Fair in school
18th November		Bring £1 and dress in something spotty for Children in Need
21st November		Event Day with Olympian Athlete
5th December	14.00	KS1 Christmas Play
6th December	09.30	KS1 Christmas Play
7th December	13.00 17.30	Choir to “The Big Sing” Performance at Congress Theatre
13th December	09.30 & 19.00	Year 4 & 5 Christmas Play
16th December		Last day of Term 2
3rd January		First day of Term 3